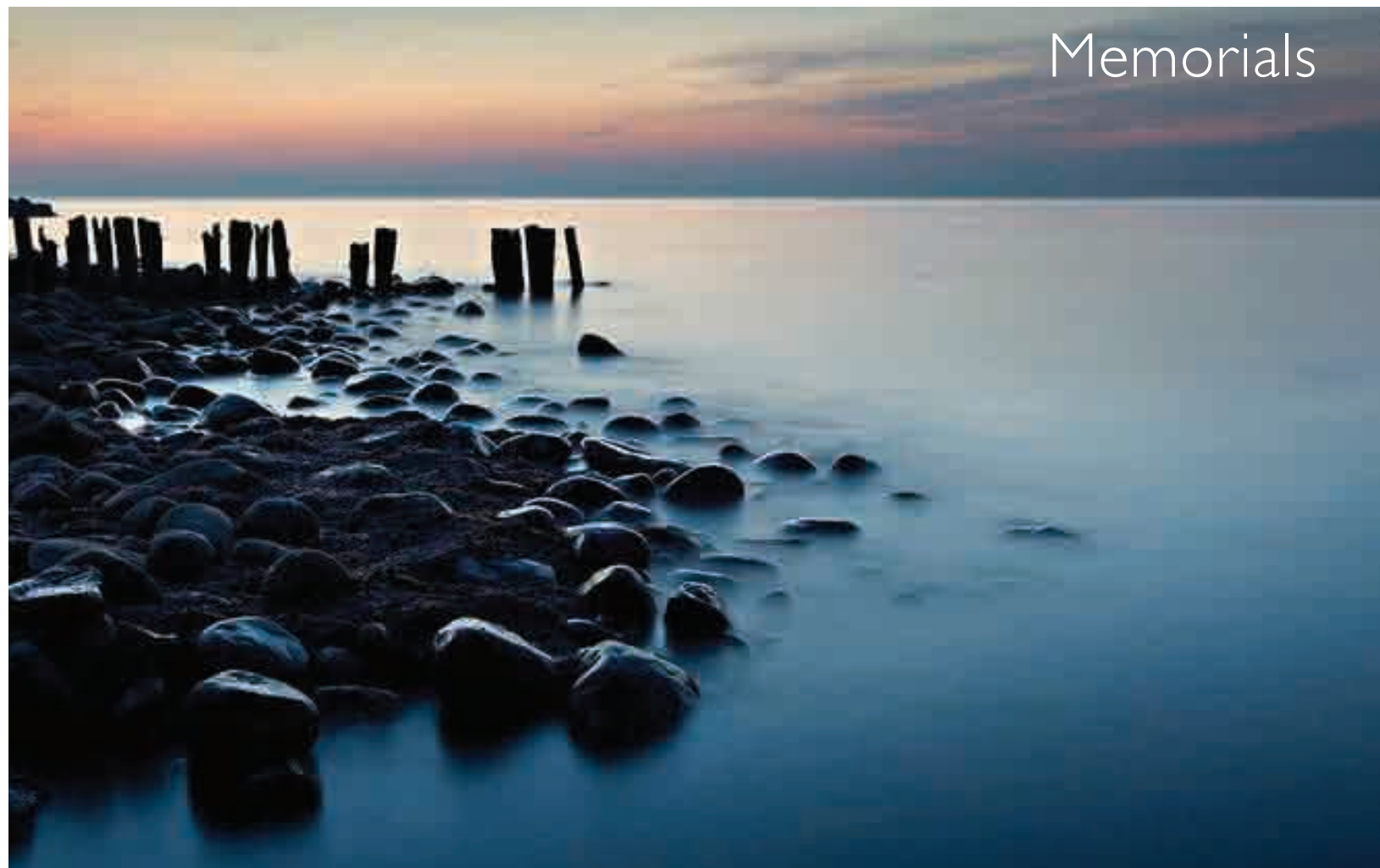


COUNTY STONE

Memorials



COMPASSION CARE & CRAFTSMANSHIP

Contents

Welcome	1
Creating a Memorial	3
Choosing a Memorial	5
Shapes & Stones	7
Catalogue of products	8
Lawn Cemetery	9
Lawn Churchyard	14
Traditional	18
Children's Memorials	23
Cremation	24
Vases	29
Inscriptions & Verses	31
Memorial aftercare	32



Jane Gibson

County Stone Memorials
Founder & Managing Director

Welcome to County Stone Memorials

Throughout the centuries stone has been used to mark the passing of time...

Beautiful, durable and symbolic – from granites to marbles, limestone to slate - at County Stone Memorials we are committed to offering our valued customers a breadth of choice, experience and support when selecting a memorial – individual hand-crafted pieces created to the highest specification, delivered and placed with dignity, respect and care.

We understand each memorial should reflect the individuality of your loved one while celebrating their life. As you look through this brochure you will discover that our collection and choice of materials, shapes and designs is as comprehensive as our service - and if you have a specific design detail or style in mind, our team of highly skilled stone masons can carve your ideas, literally, into time immemorial.

Over the years our family-run business has built an excellent reputation locally and nationally for providing a quality memorial service with commitment, care and compassion. Please be assured both my team and I are here to help you create a lasting tribute to life and a focal point for remembrance – a testament to loved ones, friends and family. We aim to take the weight off your shoulders by handling administrative detail while guiding you through design, style and text if required.

At County Stone we pride ourselves on combining the latest technology with traditional stone carving skills. Please feel free to visit our workshops and memorial showroom where a warm and expert welcome awaits you.

With very best wishes

Jane Gibson

COMPASSION CARE & CRAFTSMANSHIP

welcome...



'All that live must die, passing through nature to eternity'

William Shakespeare 1564-1616



Creating a Memorial

Time is a great healer...

We aim to make your visit to County Stone Memorials as stress-free as possible by managing each stage of a memorial's creation from selection to placement. We encourage you to imagine how a memorial could reflect the personality of the deceased through the inscription, carving and style – important details which will ultimately make your choice unique and very special.

Making a hasty decision when you are feeling stressed may result in future regrets so why not bring a family member or friend along with you and take time together to create your tribute? Our memorial showroom has a wide choice of stone and lettering samples, offering visitors inspiration and a breadth of choice.

We take the weight off your shoulders by providing a full memorial stone service - this means creating the memorial, taking care of administrative detail while ensuring you have as stress free an experience as possible. We will liaise with relevant authorities and complete appropriate documentation prior to one of our NAMM (National Association of Memorial Masons) accredited stonemasons placing the stone.

Designing a memorial

Shape: We offer a comprehensive range of over 40 shapes – from ornate to simple Norman arched designs. The shape of the memorial will dictate the overall style so it's wise to consider all the options.

Material: Stone, in whatever form it takes, is timeless – which stone and what finish? As you look through this brochure you will discover our broad selection of stones and colour choices.

Inscription: What to say? We have given you some further ideas on page 23 but you may have already thought of the appropriate wording. There are numerous fonts, finishes and styles available and our highly skilled stone masons will advise you accordingly.

Individuality: This can be expressed in many ways – through engraving, ornaments and pictures – a symbolic visual adds character to the memorial and we encourage our customers to think how best to reflect their loved one's personality.

COMPASSION CARE & CRAFTSMANSHIP

creating...

Costs:

Please refer to the enclosed price list for all prices related to the creation of a chosen memorial. If you have any questions regarding costs please do not hesitate to speak to one of our Managers who will supply you with a detailed quote depending on your requirements.

Form and decoration

Whatever tribute you ultimately choose it will become a symbol of life and a tribute to the passing of a loved one.

During the 18th century, gravestones were often decorated with mementos such as winged cherubs, heavenly crowns or urns. Some had more elaborate allegorical figures, such as Old Father Time, or emblems of trade or status, or even some event from the life of the deceased.

Later in the same century, large tomb chests were commonly used by the gentry as a means of commemorating a number of members of the same family. In the 19th century, headstone styles became more diverse, often featuring elaborately carved markers, such as crosses or angels.

Today, some forms of simple decoration are popular once more. Special emblems on tombstones indicate several familiar themes in many faiths. Some examples are: anchor - steadfast hope, angel of grief – sorrow, arch - rejoined with partner in heaven, book - faith or wisdom and cherub - divine wisdom or justice and a column - noble life.



'The life of the dead is placed in the memory of the living'

Marcus Tulips Cicero 106-43

Choosing a Memorial

Choosing a memorial and the administration involved can at times appear confusing and complex. Here are some frequently asked questions and our responses:

How long should we wait before the memorial is placed? It takes six months for the ground to settle to avoid the stone leaning, this does not apply to crematorium or memorial vases.

Will the location affect the choice of design? The design is dictated by whether the memorial will be placed in a churchyard or cemetery. County Stone Memorials will submit the proposed design to the appropriate authority for approval. The local authority will also supply guidelines when you buy the grave. Churchyards do not permit kerbing, statuary or book designs or marble or polished granite memorials.

Can a design, emblem or picture be engraved on a memorial? Our skilled craftsmen can reproduce almost any design you desire, depending on the stone you choose, to create a unique memorial. Please ask us for advice.

Lettering – what to choose? There is a wide choice of fonts and styles and we can advise on which is most appropriate for your choice of stone. Many of our customers prefer a standard Roman font while italics enhance a poem or religious text. There are different methods of application for lettering – generally letters are incised and painted with black or silver enamel, gilded lettering is often used for dark granite while letters carved into stone can be left natural, as often seen in churchyards.

Which stone to choose? Location can be a deciding factor when choosing a stone – if, for example, the memorial is placed in an exposed area like an open hillside a softer stone like a Portland may weather more quickly and we would suggest granite instead.

How is the memorial placed? County Stone Memorials will apply to the church or cemetery authorities on your behalf for permission to erect the stone – a fee is normally paid to the authorities at this time. We erect the memorial on a concrete foundation and, as N.A.M.M. (National Association of Memorial Masons) accredited stone-masons, we adhere strictly to correct fixing procedures.

COMPASSION CARE & CRAFTSMANSHIP

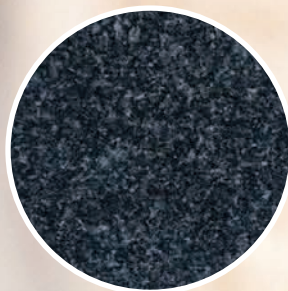
choosing...



Choice of stone

County Stone Memorials offer a wide choice of stone (marble, granite, stone, slate) and colours.

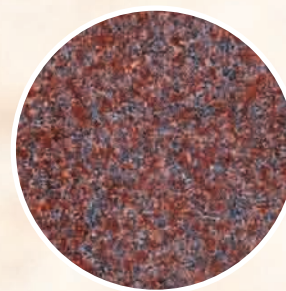
Choosing the shape and material for a memorial provides the basis for the overall design. If there is any particular shape you have in mind and are unable to find it here we are able to create bespoke designs. Please do not hesitate to make an appointment with one of our stone-masons to discuss the options.



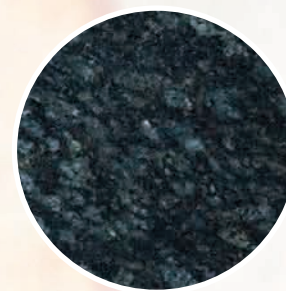
Dark Grey Granite



Black Granite



Imperial Red Granite



Blue Pearl Granite



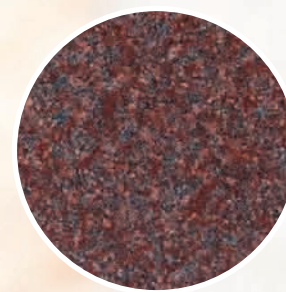
Purbeck Limestone



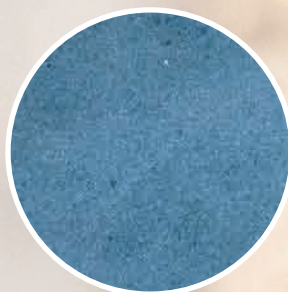
Celtic Limestone



Portland Limestone



Ruby Red Granite



Green Slate



Dove Grey Marble



Nabresina Marble

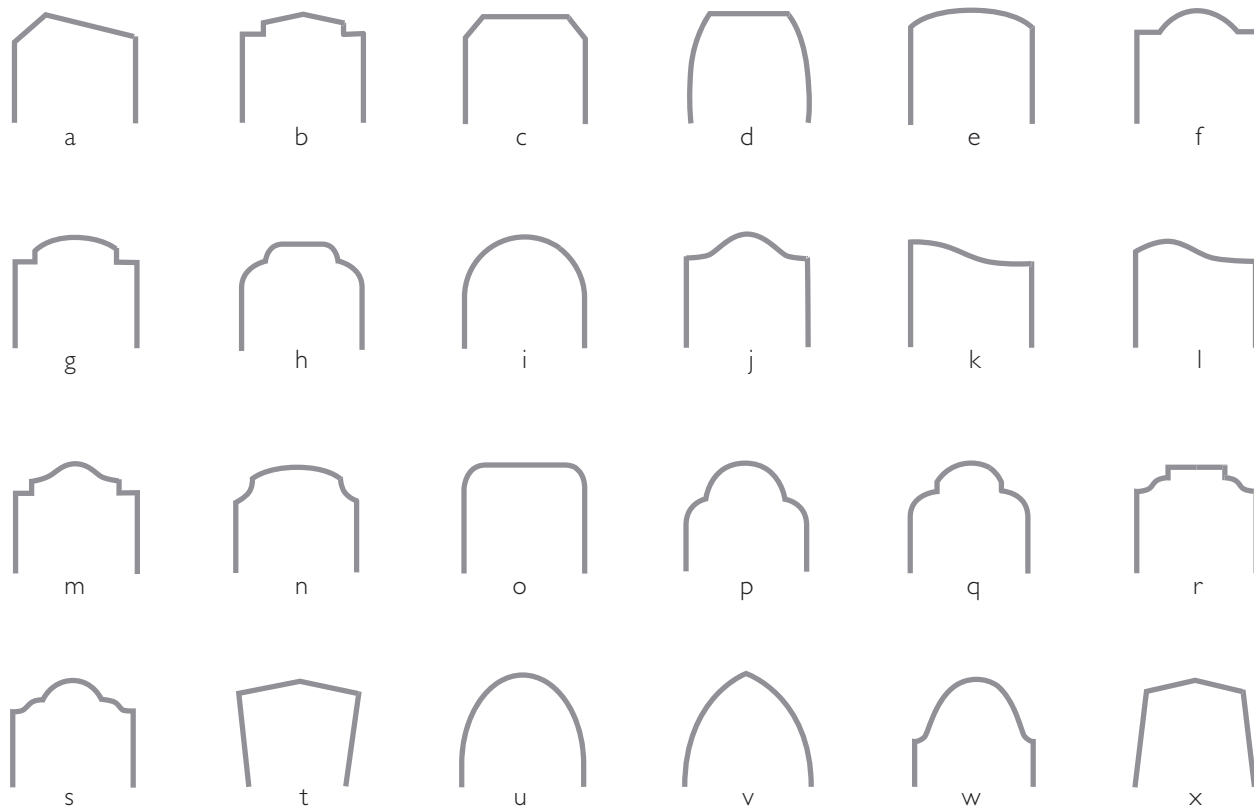


Emerald Pearl Granite

Shapes & Stones

There is an extensive choice of memorial shapes in our product section but, if you are unable to find the shape you want, you can select from those below.

Please feel free to come to our showroom where we can talk to you in person about the choice of memorial stone and shape.



COMPASSION CARE & CRAFTSMANSHIP

choosing...



OUR PRODUCTS

Lawn Cemetery

Lawn Churchyard

Traditional

Children's Memorials

Cremation

Vases



'The life of the dead is placed in the memory of the living'

Marcus Tulips Cicero 106-43



Aldingbourne 1



Aldingbourne 2



Aldingbourne 3



Aldingbourne 4



Aldingbourne 5



Aldingbourne 6

LAWN CEMETERY

Most individual cemeteries will have their own regulations regarding the style of headstones they allow and it is worthwhile visiting the cemetery to see the general styles already in place.

It is advisable to also bear in mind how the elements and location can affect the long term looks of your memorial and this can affect the type of stone you choose.

COMPASSION CARE & CRAFTSMANSHIP



Aldingbourne 7



Aldingbourne 8



Aldingbourne 9



Aldingbourne 10



Aldingbourne 11



Aldingbourne 12



Aldingbourne 13



Aldingbourne 14



Aldingbourne 15



Aldingbourne 16



Aldingbourne 17



Aldingbourne 18



Aldingbourne 19



Aldingbourne 20



Aldingbourne 21



Aldingbourne 22

COMPASSION CARE & CRAFTSMANSHIP



Aldingbourne 23



Aldingbourne 24



Aldingbourne 25



Aldingbourne 26



Aldingbourne 27



Aldingbourne 28



Aldingbourne 29



Aldingbourne 30



Aldingbourne 31



Aldingbourne 32



Aldingbourne 33



Aldingbourne 34



COMPASSION CARE & CRAFTSMANSHIP

LAWN CHURCHYARD

The minister of your parish will give their permission for choice of stone and inscription as new gravestones must blend into the surroundings of the churchyard and not overpower the existing headstones. Polished or mirror finishes are not generally acceptable while honed york/limestone & slate are popular choices.



Birdham 1



Birdham 2



Birdham 3



Birdham 4



Birdham 5



Birdham 6



Birdham 7



Birdham 8



Birdham 9



Birdham 10



Birdham 11



Birdham 12



Birdham 13



Birdham 14

COMPASSION CARE & CRAFTSMANSHIP



Birdham 15



Birdham 16



Birdham 17



Birdham 18



Birdham 19



Birdham 20



Birdham 21



Birdham 22



Birdham 23



Birdham 24



Birdham 25



Birdham 26



Birdham 27



Birdham 28



Birdham 29

COMPASSION CARE & CRAFTSMANSHIP

TRADITIONAL

You will have to check with the cemetery or church regulations to see if they allow the installation of a kerb set, which is the most effective way of enclosing a grave space. Kerb sets can have either a cover slab in matching material or we have chippings available in a wide range of colours to complement your chosen memorial stone colour.



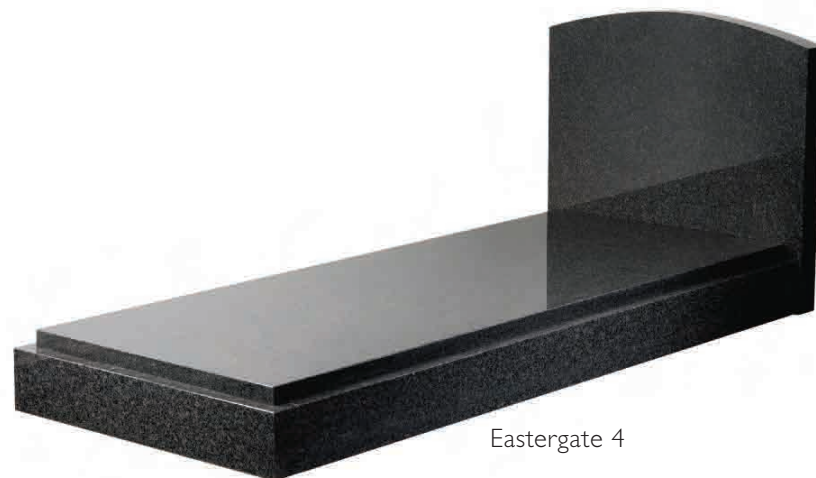
Eastergate 1



Eastergate 2



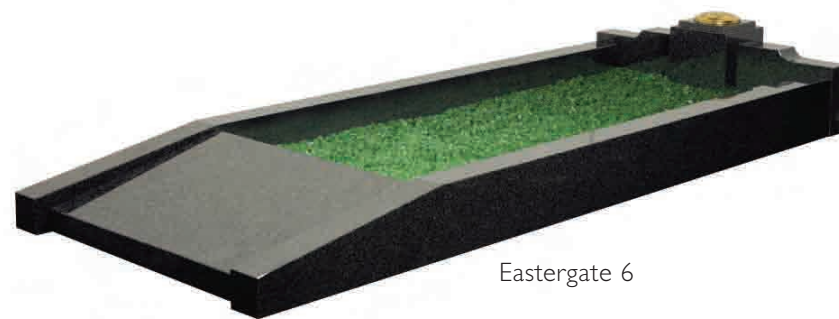
Eastergate 3



Eastergate 4



Eastergate 5



Eastergate 6

COMPASSION CARE & CRAFTSMANSHIP



Eastergate 7



Eastergate 8



Eastergate 9a

Eastergate 9b



Eastergate 10



Eastergate 11



Eastergate 12



Eastergate 13



Eastergate 14

COMPASSION CARE & CRAFTSMANSHIP



CHILDREN'S MEMORIALS

These are some of the most popular designs for memorials for children. If you have a particular design or character you would like incorporated in a carving, our team can advise you of the most suitable memorial for a lasting tribute to a loved and departed child.



Patching 1



Patching 2



Patching 3



Patching 4



Patching 5



Patching 6

COMPASSION CARE & CRAFTSMANSHIP

CREMATION

After the cremation, you may want to place a memorial to your loved one. Please check with the crematorium what they allow in the way of markers or plaques and where they may be placed. Many crematoriums have a dedicated area for memorials away from where the ashes can be scattered.



Bosham 1



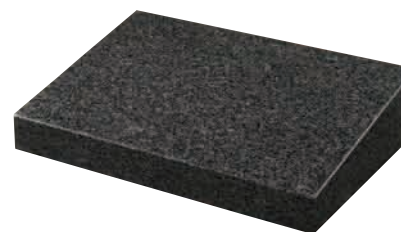
Bosham 2



Bosham 3



Bosham 4



Bosham 5



Bosham 6



Bosham 7



Bosham 8



Bosham 9



Bosham 10



Bosham 11



Bosham 12

COMPASSION CARE & CRAFTSMANSHIP



Bosham 13



Bosham 14



Bosham 15



Bosham 16



Bosham 17



Bosham 18



Bosham 19



Bosham 20



Bosham 21



Bosham 22



Bosham 23



Bosham 24



Bosham 25

COMPASSION CARE & CRAFTSMANSHIP



VASES

These vases are memorials providing a simple place for holding and displaying flowers to brighten up a grave. Vases are suitable for most cemeteries or as markers for cremation memorials, they can be combined with a headstone and base or may just stand alone with a short inscription.



Chidham 1



Chidham 2



Chidham 3



Chidham 4



Chidham 5



Chidham 6



Chidham 7



Chidham 8

COMPASSION CARE & CRAFTSMANSHIP

Lettering style

Choosing the style of letters for memorial inscriptions will give the stone individuality. There are numerous fonts available to enhance the stone – tones and contrasts are important to give the inscription stand-out.

Different methods of preparing the stone for inscription include a sandblast computer stencil or hand-cut stencil. The more traditional method is to cut the stone by hand, while various methods of filling in the lettering are applied from enamelling, gilding and using lead either raised or flushed. Please note some styles of lettering are not appropriate for certain finishes and some finishes not suitable for certain stones.

University Roman

Times Roman

Helvetica Bold

Computer cut stencil

Old English

Hand cut stencil

Regency Script

*'For the sword outwears its sheath,
and the soul wears out the breast'*

Lord Byron (1788-1824)

Inscriptions & Verses

The following are examples of verses and texts to offer inspiration. However, many of our customers like to create their own personalised texts and we will work with you to create the best layout of wording possible. Often religious texts, verses and extracts from hymns are used as inscriptions.

*Suffer little children to come unto me
for such is the kingdom of heaven*

R.I.P. Sleeping In God's Keeping

Resting

Sadly missed

*In our minds a constant thought
In our hearts a silent sorrow*

*Her life a beautiful memory
her absence a silent grief*

*Brave, Unselfish, Loving
Beloved by all*

In the midst of life we are in death

*To the world he was just a part
To me he was the world*

*Memory is a golden chain
That binds us till we meet again*

*God found the path was growing rough
the hill too steep to climb
so he gently closed her eyelids
and whispered "Peace be Thine"*

COMPASSION CARE & CRAFTSMANSHIP

choosing...



Memorial after-care

Maintaining the memorial in beautiful condition is dependent on the stone and style chosen. Some stones are harder-wearing and easier to clean.

A marble memorial requires special treatment to restore its glory. Letters carved into granite can stay clear for many years while stone may require re-carving in time.

A granite memorial will require periodic cleaning. A damp cloth or paper towel can be used to clean and shine granite's polished surface.

Removing water spots. Please contact your cemetery if the granite headstone develops water spots from natural moisture or sprinklers. We do not recommend using cleansers or solvents to clean the stone's surface; many cleansers will strip the polished surface and paint from your memorial.

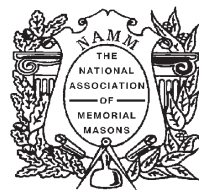
Granite is a hard, natural stone with a polished surface. It is also porous, which allows for absorption of water or rain over time. This is not a defect of the stone, but a natural characteristic. All marble can stain, especially if it is placed in a wooded area, and will require specialized attention.

Granite is one of the earth's most durable materials, and so it can withstand the elements better than marble or bronze. With a durable rating of 7, granite is much harder than marble (which has a rating of 3), but not quite as hard as a diamond (rated 10). Even with very little maintenance, granite retains its natural beauty. Weather conditions will, over time, alter the appearance of the granite surface. This is a natural process and should not detract from the beauty of the stone which will last forever.

County Stone Memorials is proud to be a corporate member of the Guild of Master Craftsmen and an accredited member of the National Association of Memorial Masons.



The Guild of Master Craftsmen's stringent entry criteria ensure that only those companies who meet the exacting requirements of the Guild are awarded membership, which is by no means automatic. Members are required to prove that they have earned the right to be called Master Craftsmen - through the quality of their work, their commitment to customer care and the level of service they provide.



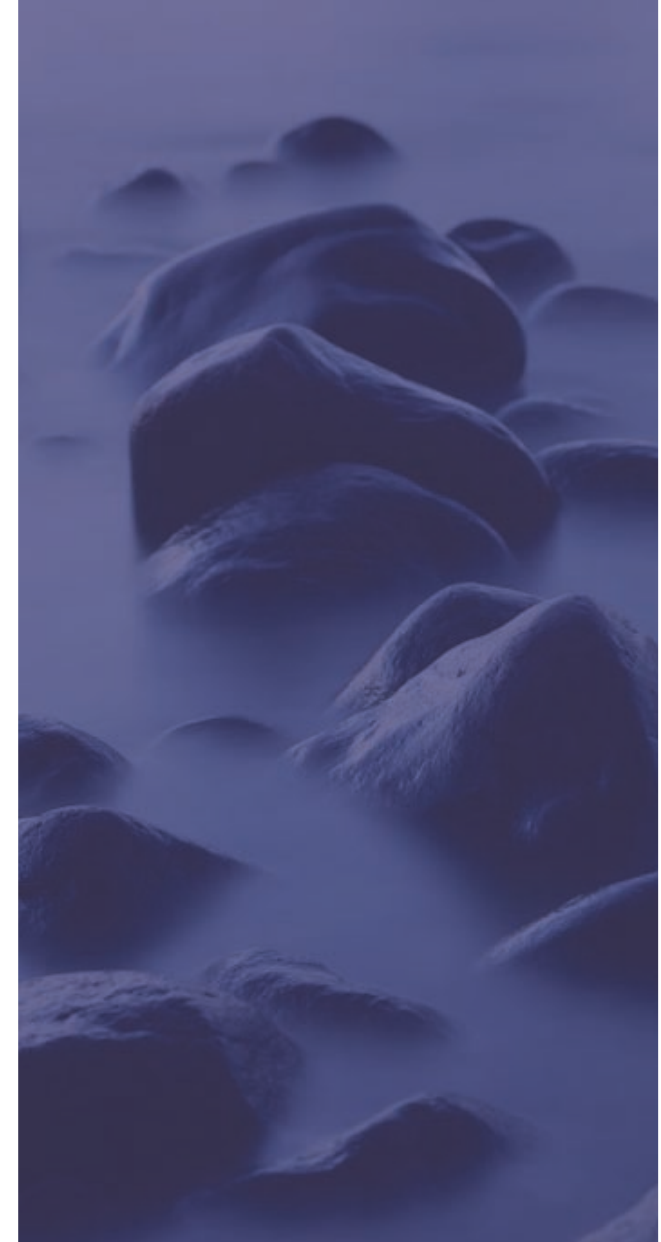
The National Association of Memorial Masons is dedicated to furthering the memorial masonry industry and safeguarding the interests of the bereaved through the promotion of high standards, wide choice and increased understanding in all matters relating to natural stone memorials.

Brochure produced by PR (+) T: 07748 536596

Brochure designed by Helen Wyatt Design: www.helenwyatt.co.uk

Brochure photography by Richard Walberton

Cover photograph by Richard Lewisohn





County Stone Memorials Ltd

Units 4 and 7 Hooe Farm Industrial Estate
Tye Lane
Walberton
West Sussex
BN18 0LU

T: 01243 544770 F: 01243 544779

Opening Hours: 8:00am - 4:30pm Monday-Friday. Other Times by appointment only.

www.countystonememorials.co.uk

